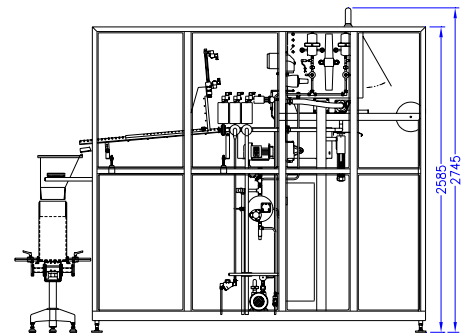
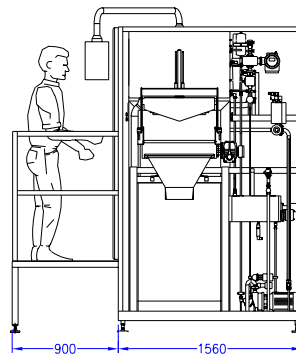
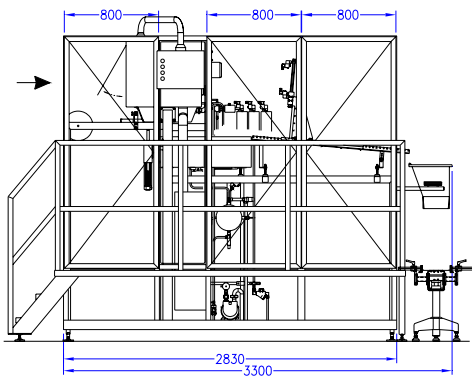
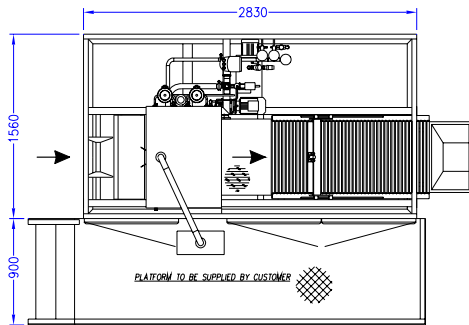


FULLY AUTOMATIC ASEPTIC BAG-IN-BOX FILLING MACHINE



B400

- Bag supply, filling and separation takes place fully automatically.
- Separated handling of the bag and box for additional hygiene
- Suitable for use of 2 to 25 litre bags with all standard closure systems.
- Cleaning of filling valve by steam and sterile air (Cleaned In Place).
- Steam sterilisation and, subsequently, drying of the filling valve with sterile air, after each filled bag. The filling valve is fully clean and dry when it comes into contact with the spout of the next bag.
- Vacuum purging of the bag before and after filling to prevent product from dripping
- Steam or nitrogen injection in the bag once it has been filled.
- High filling accuracy.
- Standard model in stainless steel AISI 304 and 316L



TYPE: B400

Capacity:	<i>5400-9000L/h</i>
Weight:	<i>approx. 950kg</i>
Electricity:	<i>3ph. 400V+N+PE 7,75 kW (including steam generator 6kw)</i>
Air consumption:	<i>176L/min @ 6-10 bar Dew point: 4 °C 12mm hose</i>
Cold water:	<i>3,2L/min @ 3 bar ¼" BSP</i>
Vacuum:	<i>20L/min @ -0,4 bar</i>
Steam:	<i>900kg/h @3 bar produced by steam generator ½" BSP Max. temp: 130°C</i>